

PLAN DE INCADRARE IN ZONA
scara 1:5000

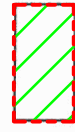
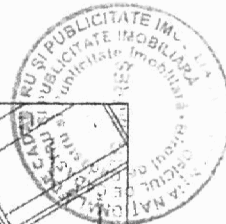
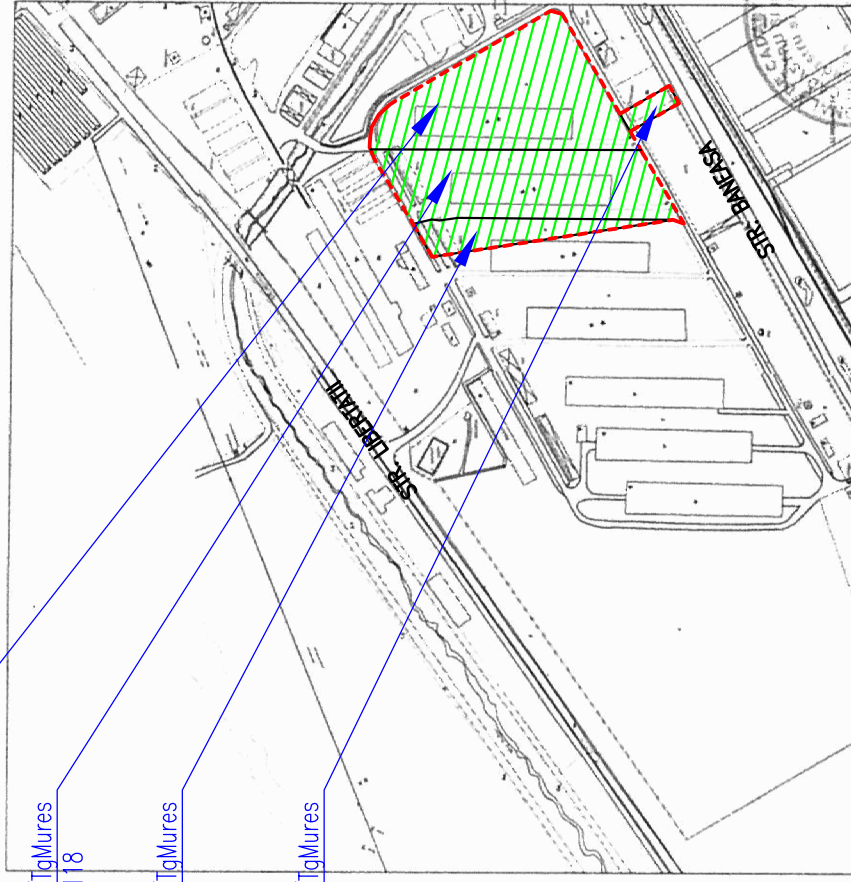
Judetul MURES
mun. Tg.Mures

CF 137691/TgMures
nr.cod: 137691
S=9691mp

CF 123118/TgMures
nr.cod: 123118
S=8365mp

CF 132069/TgMures
S=2216mp

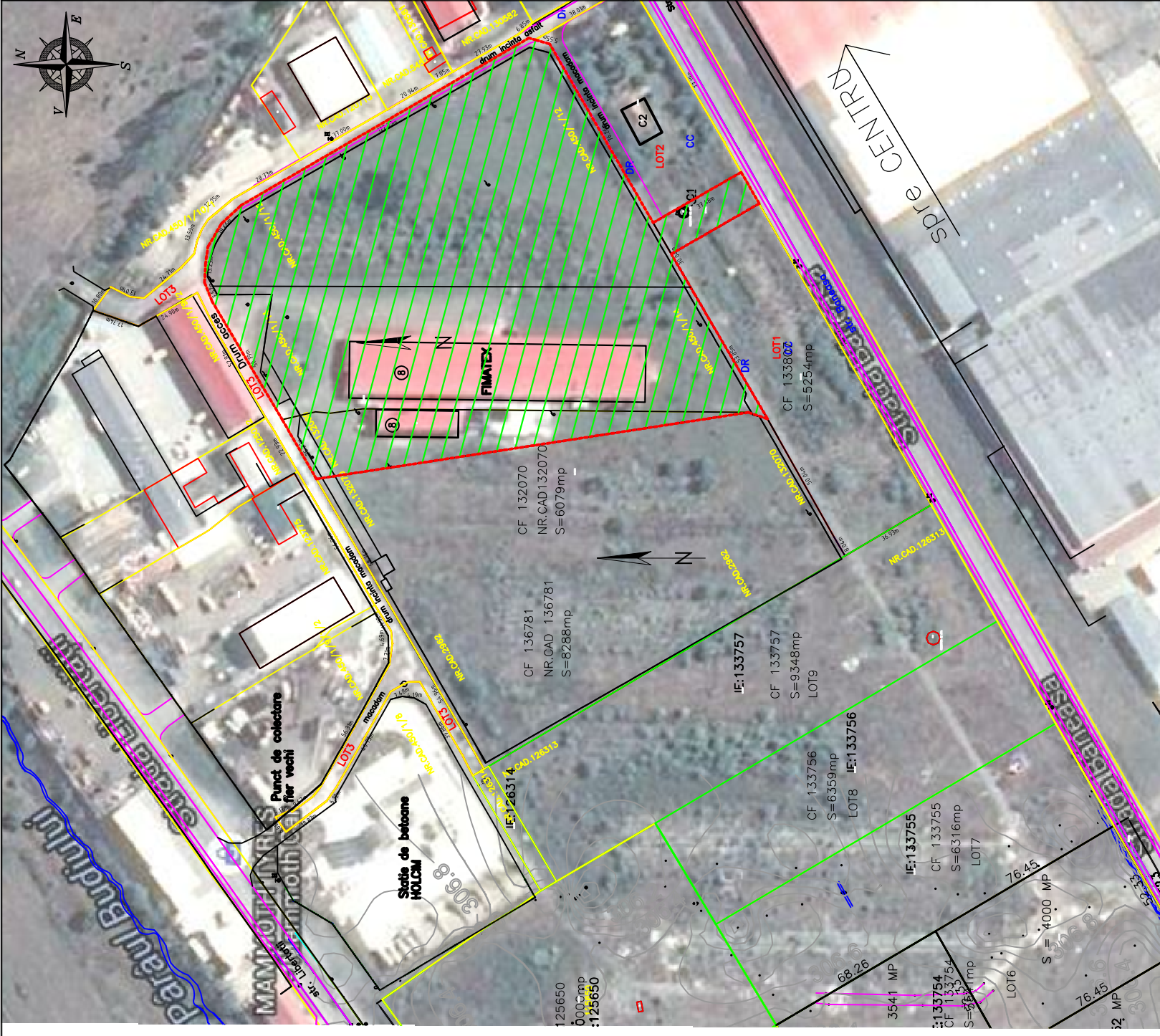
CF 137152/TgMures
S=500mp



Amplasament

Oficiul de Cadastru si Publicitate
Imobiliară Mures
IOSID RADU EMANUEL
referent

Plan pus la dispozitie de OCPI Mures



LEGENDA:



zona studiata

 BIROU DE ARHITECTURA SI URBANISM CALUSERI - J26-728-1994 sc ARHIGRAF srl	orh. Octavian LIPOVAN conform documentatie topografica	sef proiect intocmit	arh. Octavian LIPOVAN SC FIMATEX SRL str. BANEASA, nr.8, Tirgu Mures
	ing. SZOCS Angela	desenat verificat	
BIROU DE ARHITECTURA SI URBANISM CALUSERI - J26-728-1994		SC FIMATEX SRL str. BANEASA, nr.8, Tirgu Mures	
TITLU RECONFORMARE ZONA "LM" IN ZONA ACTIVITATILOR PROIECT: PRODUCTIVE SI DE SERVICII PENTRU CONSTRUIRE HALA DE PRODUCTIE str. BANEASA, nr.8, Tirgu Mures		DATA: iunie 2017	NR.PROIECT: 494-16
TITLU PLAN INCADRARE IN ZONA PLANSA:		SCARA: 1:5.000/ 1:2.000	REV. - NR.PLANSĂ : U 001

ACEST PROIECT ESTE PROPRIETATEA INTELLECTUALA A SC ARHIGRAF SRL. UTILIZAREA LUI INTRA SUB INCADAREA LEGII DREPTULUI DE AUTOR.